


# A selection of the tools either developed, supported or promoted by EU BON



Quentin Groom  
Botanic Garden Meise

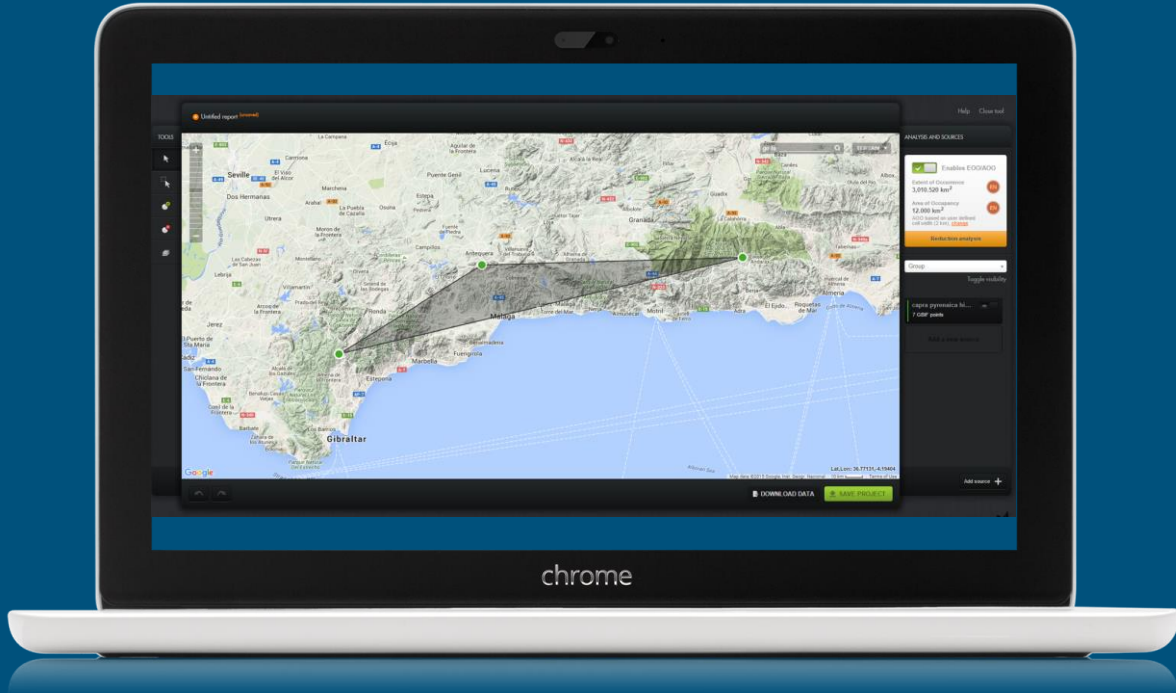


# GeoCAT

A simple online tool to assess spatial criteria for IUCN conservation assessments.

- Extent of occurrence
- Area of occupancy

<http://geocat.kew.org/>



# Downscaling

A method for downscaling occupancy estimates from coarse resolution atlas data.

- Conservation assessments
- Comparisons of modern and historical data collected at different resolutions

<https://cran.rstudio.com/web/packages/downscale/index.html>

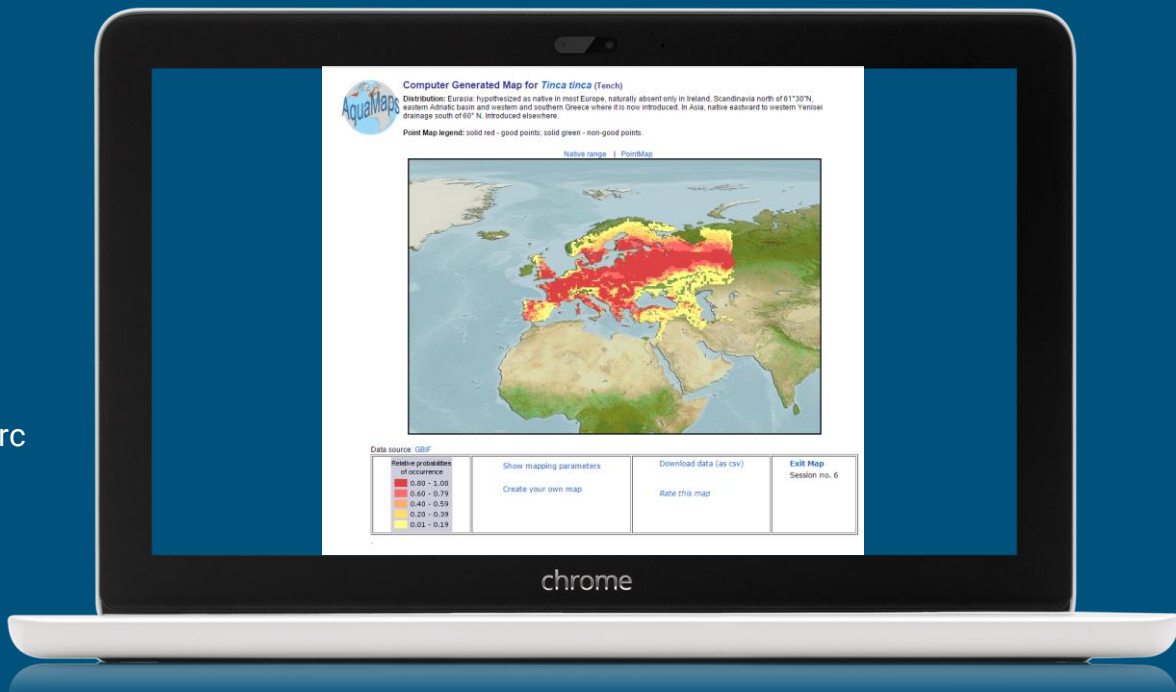


# Aquamaps

Standardized distribution maps.

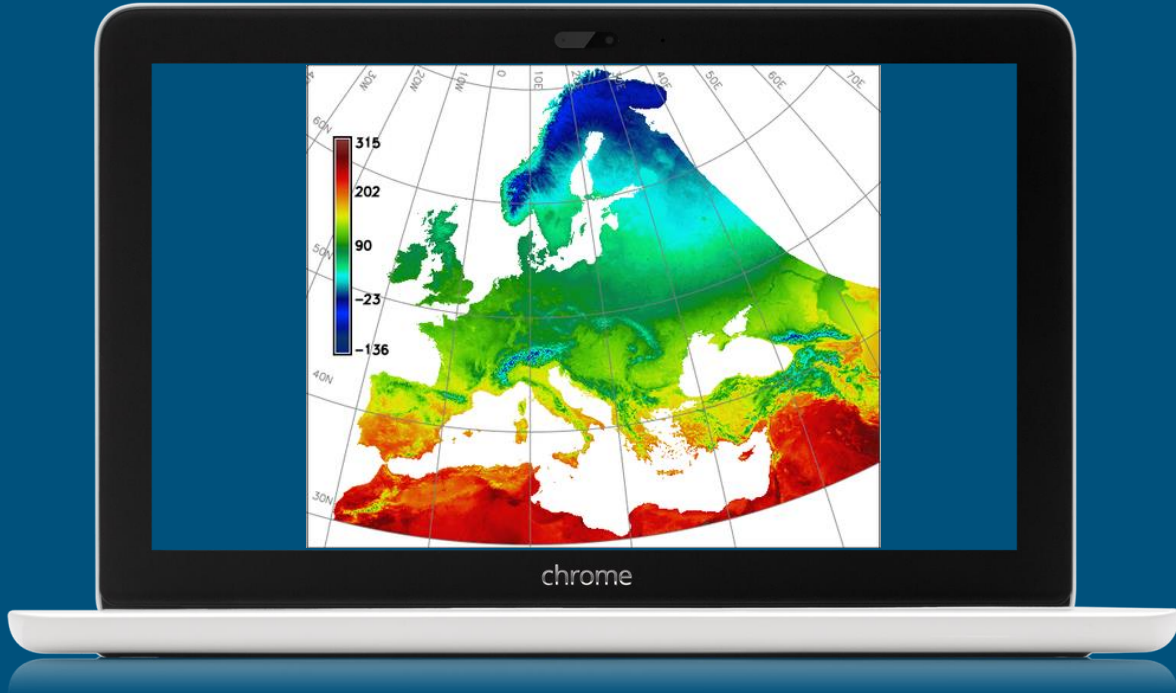
- Freshwater fish
- Marine fish
- Invertebrates
- etc.

[http://www.aquamaps.org/AM\\_Europe/search.php](http://www.aquamaps.org/AM_Europe/search.php)



# Data related tools

- EuroLST - Land surface temperatures in a BIOCLIM-like format  
(<http://gis.cri.fmach.it/eurolst-bioclim/>)
- Data publishing and dissemination toolbox  
(<http://www.pensoft.net/page.php?P=23>)
- Extended the Darwin core data standard for survey-based data  
([http://eubon.cybertaxonomy.africa.museum.be/gbif\\_ipt](http://eubon.cybertaxonomy.africa.museum.be/gbif_ipt))

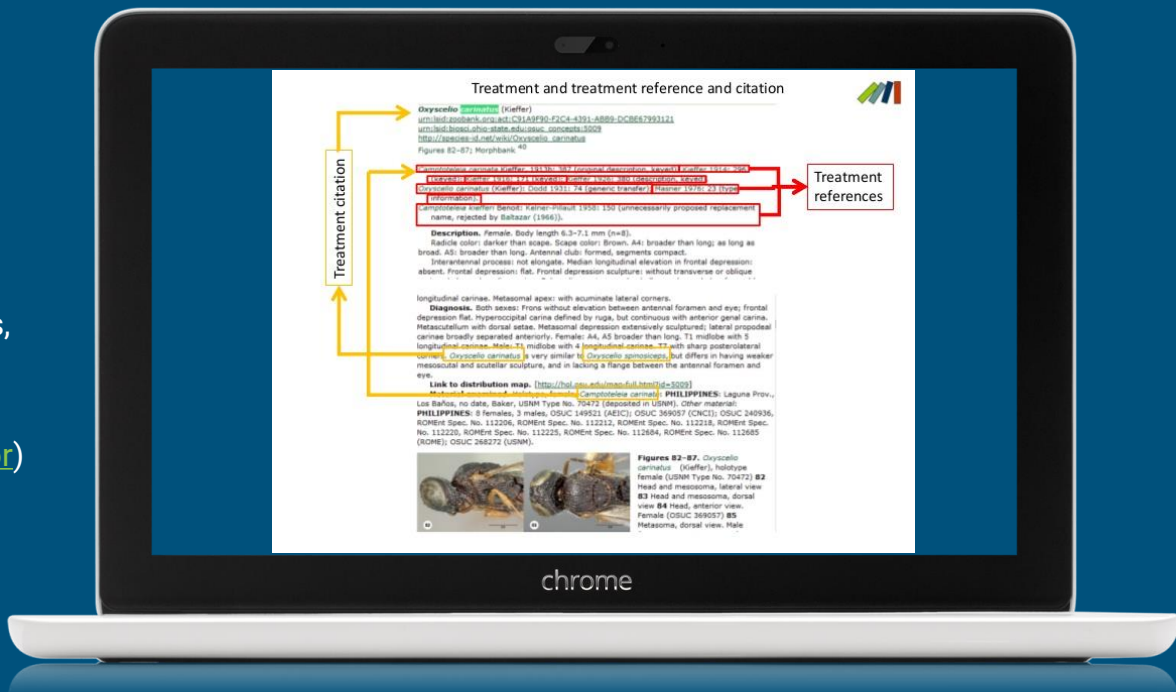


# Data mining tool

## GoldenGATE Imagine

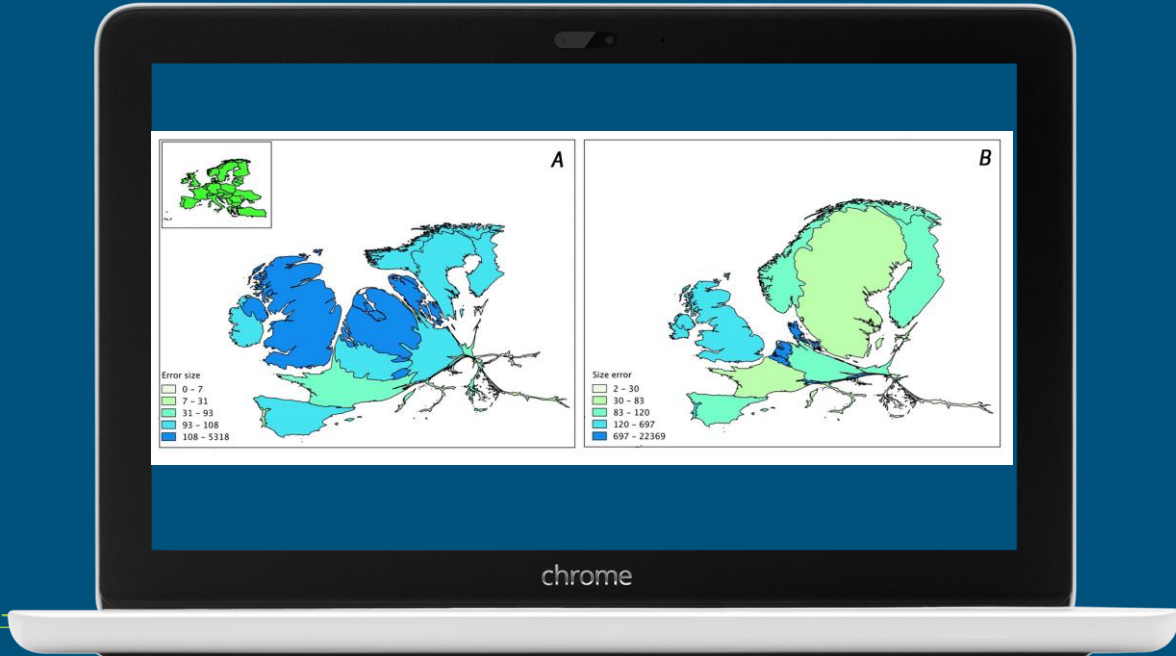
- Extracting data from taxonomic texts, traits, observations, names etc...

([http://plazi.org/wiki/GoldenGATE\\_Editor](http://plazi.org/wiki/GoldenGATE_Editor))



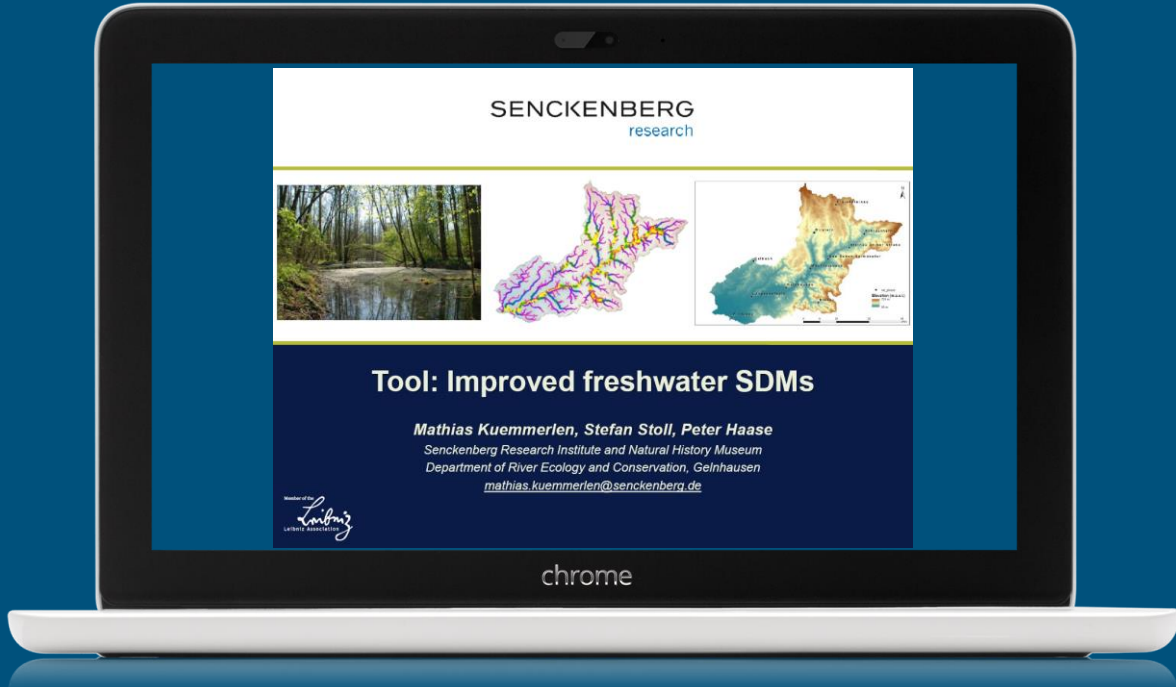
# Design and analysis

- Roadmap to species distribution modelling
- Virtual Ecologist  
modelling the errors created by surveyors to improve survey designs
- Cartogram  
Visualizing biological data to quickly communicate information  
(<http://www.isprs-ann-photogramm-remote-sens-spatial-inf-sci.net/II-3-W5/333/2015/isprsannals-II-3-W5-333-2015.pdf>)



# Modelling Tools

- Alpha-adjusted SDM
- Freshwater ensemble SDM
- Biodiversity upscaling toolkit
- Fourier transform





# The End

